



OPEN WORLD ALLIANCE

CO-CREATING A REGENERATIVE FUTURE

CONTENTS

1. INTRODUCTION

- 1.1 Who We Are
- 1.2 Challenge
- 1.3 Vision
- 1.4 Mission
- 1.5 Values
- 1.6 Our Approach
- 1.7 Alliance Model

2. ACTIVITIES

- 2.1 Core Functions
- 2.2 Solutions

Strategic Alignment & Planning
Technology Solutions
Social Change Solutions
Sustainable Funding & Resource Solutions
Education & Gaming Solutions
Community & Membership

- 2.3 Areas of Production
- 2.4 Coherence Engine
- 2.5 Regenerative Database
- 2.6 Co-Creation Platform
- LaunchVersion 1
- 2.7 Phoenix FinTech
- 2.8 Education & Gaming Systems

3. DELIVERY

- 3.1 Delivery
- 3.2 Delivery of Stages

4. PARTNERSHIP STRUCTURE

- 4.1 Seed Partnership Structure
- 4.2 Seed Development

5. MEMBERSHIP

- 5.1 Membership
- 5.2 Co-Creation Onboarding
- 5.3 Onboarding System

6. ORGANISATION

- 6.1 Organisation Structure
- 6.2 Phoenix FinTech Funding
 - Higher Status Global
 - Open World Alliance
 - Higher Status Foundation

7. PROJECT ROADMAP

8. ALLIES

9. CONTACT

This brochure provides insights into the Open World Alliance model, vision and activities and was designed to introduce new contacts to our core operations as a starting point for further communications.

All information correct at time of writing in March 2021.



INTRODUCTION

WHO WE ARE

Open World Alliance is an organisation supporting the development of a global network of social innovators, pioneering organisations, creative entrepreneurs, community builders, solutionaries and sustainability specialists dedicated to accelerating the regenerative movement towards positive planetary transformation. We are co-creating with the growing global movement of change-makers who are collectively calling to consciously steward a better future that benefits people and planet.

Welcome to
OWA



CHALLENGE

We stand at a crucial point in human history, witnessing multiple planetary life support systems at tipping point. The multiple converging crises of climate destabilisation, environmental degradation, biodiversity loss, fossil fuel dependency, destructive economics, failing governance and a fractured disconnected society have exposed the fragility and friction points of current systems overwhelmed and breaking down at the rapid disruption.

Many viable systemic solutions have been developed and are ready for implementation but are rejected by current operating systems designed for power and profit. Governmental systems, corporate structures and global currency models run a program that has led us into a life of imbalance and disharmony. Lack of funding, public awareness and obstacles that deter major change continue to thwart efforts that could ultimately relieve planetary suffering.

We recognise the urgency and magnitude of these cascading impacts and shortcomings of current mainstream systems to address these complex intersecting global crises.



YESTERDAY'S
SOLUTIONS
NO LONGER
WORK

VISION

We envision an evolutionary leap forward into a regenerative Gaia-centered Renaissance. OWA is dedicated to co-creating a new paradigm that activates the conscious evolution of all our social systems to work in dynamic equilibrium with natural law.

We imagine a redesigned world that cultivates health and harmony, liberates the fullness of human potential and makes possible a thriving planet that truly works for all.

ANOTHER
WORLD IS
POSSIBLE

“THE BEST
WAY TO
PREDICT THE
FUTURE IS TO
CREATE IT.”

PETER DRUCKER
(1909 - 2005)





MISSION

We embrace the potential within today's seemingly intractable systemic challenges as a catalyst for transition and change. 2020 became the first time in human evolution that collective presencing became global with the pandemic crisis affecting every facet of our lives across the world.

We are committed to leveraging the unprecedented opportunity at this great threshold of humanity. It's time to turn a new page, reimagine and reorganise. This next decade will be decisive.

OWA operates as an imaginative catalyst, generating strategic insight and bringing a holistic overview to the complex operating environment of the 21st century.

THROUGH FUSING
ADVANCES IN TECHNOLOGY
WITH SUSTAINABILITY WE
ARE WORKING TO SOURCE,
SUPPORT, SOLVE AND
SCALE SUCCESSFUL
NEXT-GENERATION
SOLUTIONS TO
TODAY'S BIGGEST
SOCIAL AND
ENVIRONMENTAL
PRESSURES

VALUES

We take inspiration from nature, with principles of biomimicry infused throughout every aspect of our work. Nature has been successfully road-testing systemic innovation for millennia and holds deep wisdom in her biological blueprints.

LET NATURE BE OUR TEACHER

Principles of natural living systems are adopted as we:

- ✿ Commit to regenerative development - a model that evolves beyond sustainability and seeks to actively reverse environmental degradation and positively reinforce vital living systems.
- ✿ Adopt circularity in our funding models to reinforce and amplify cycles of benefits.
- ✿ Understand the dynamic interdependence of living systems in our belief in radical collaboration and synergistic integration for collective thriving.
- ✿ Value the strength and resilience in diversity, as we seek to embrace multiple perspectives.
- ✿ Recognise the fractal nature of living systems as applied to our methods and practices.
- ✿ Respect the self-organisation of living systems in our appreciation of the autonomy of OWA allies.
- ✿ Honour service of the larger purpose in our commitment to working for the greater good of people and planet.

AS ABOVE SO BELOW, AS WITHIN SO WITHOUT

Our core values are deeply anchored in these foundations of nature in how we operate, work together and co-create with others.



OUR APPROACH

FUTURE-FOCUSED

OWA is a mission-driven, solutions-focused organisation that invests in the future. As we enter a fundamentally new era our narrative of what constitutes a better world needs redefining and reshaping.

TRANSDISCIPLINARY

Successful collective thriving depends on an interconnected approach that goes beyond individual silos. OWA is purposely positioned across multiple sectors to provide an integral lens for truly cohesive vision. We draw upon expertise from numerous fields including environmental regeneration, community development, systems thinking, finance, technology, data analytics, health and personal healing amongst others.

CONNECTIVITY

OWA plays a facilitatory role in pro-actively encouraging constructive next-level collaboration between change-makers to strategically coordinate skills, talent, expertise and resources to empower more effective action. We adopt the principles of holistic systems co-creation through synthesizing diverse perspectives from the collective intelligence to unlock more inclusive, radical and enlivening solutions to complex global challenges.

MULTIFACETED

OWA embraces the continuous organic evolution at the growing edge of innovation, working at multiple levels of scale and time-frames, from the smallest details to the bigger picture, addressing both short-term demands and long-term vision from multiple lenses. We operate a lean and agile business model to most effectively navigate today's world of turbulence and uncertainty.

ALLIANCE MODEL



DECENTRALISED ALLIANCE

Many of the solutions we seek to catalyse can only emerge through immense collective effort of many agents operating together. OWA is not a centralised, umbrella organisation but a distributed, decentralised alliance of multiple autonomous individuals, organisations and networks worldwide driven by a shared vision of a regenerative future.



CO-CREATIVE PARTNERSHIPS

We operate as a catalyst supporting and facilitating the emergence of many co-creative partnerships evolving through a principle of alignment. Our small team at the heart of OWA operations collaborates and co-creates dynamically with a wide range of specialists across diverse fields of expertise bringing a holistic overview to the needs of each project area. We work with allies internationally at all levels through this distributed approach for a bottom-up and top-down strategic approach to developing solutions.



COHERENT NETWORKING

A membership model is currently in development to facilitate the coherent networking of agents as OWA expands to engage with the broader community. This partnership model and the co-creation platform will support OWA's work as part of an alliance of many partners worldwide collectively developing solutions in the complex operating environment of the early 21st century to co-create a pioneering new paradigm of planetary health transformation.



CORE FUNCTIONS

OWA is contributing solutions to current challenges to achieve our future vision, offering unique value towards the collective effort through key areas of intervention including:



SOLUTIONS



STRATEGIC ALIGNMENT

New levels of communication and co-creation between key interdisciplinary change-makers is essential.

- OWA connects a wide variety of leading edge innovators in strategic partnerships to pro-actively encourage multi-disciplinary communication, unlock creative new insights and shape better decisions.
- Facilitates practical collaboration to reduce duplicated efforts and increase high-impact solutions.
- Contributes experienced strategic planning, meta-architecture and project management to leverage resources and co-ordinate targeted implementation of tools and technologies for maximum disruptive and transformative impact.



TECHNOLOGY SOLUTIONS

Effective global collaboration requires accurate information obtained from trusted comprehensive sources to quickly locate ecosystem data.

- OWA is facilitating, developing and stewarding with partners interoperable intelligent holonic data systems, platforms and co-creation tools that are distributed, decentralised and agent-centric, incorporating cutting-edge AI data management solutions. This will facilitate exchange of information and expertise to enable individuals, organisations and networks to share resources, more effective co-creation and support ecosystem adaptation and scaling.



SOCIAL CHANGE SOLUTIONS

Societal transformation requires new frameworks, methodologies, processes and practices to successfully implement a New Earth operating system that is inclusive, scalable & sustainable.

- OWA is developing and stewarding with partners structured social innovation systems and community engagement strategies to educate and empower people to adopt beneficial new behaviours, build a more collaborative playing field and transform the way individuals, organisations, communities and societies perform, adapt and thrive in the new paradigm.

There is no single approach to systemic change. The development of viable and sustainable planetary resilience requires addressing multiple aspects at every level, from top-down to bottom-up and from the local to the global.

IT'S TIME TO
REINVENT THE WORLD
LET'S GET STARTED



SUSTAINABLE FUNDING & RESOURCE SOLUTIONS

Outdated extractive and exploitative economic systems need to be replaced with regenerative and equitable economic practices that better serve society and planet.

- OWA is developing alternative funding solutions to give aligned co-creative allies the financial firepower they need to move quickly, bring projects to life, optimise self-organisation and incentivize their sustainability.
- Strategically distributing funding, grants and resources to catalyse projects, technologies and innovations that conserve and restore natural ecosystems to accelerate regenerative transformation.
- Exploring alternative economic models that redesign value and resource-based economic systems with better alignment between finance, society & environment.



EDUCATION & GAMING SOLUTIONS

Novel methods of engaging audiences are required to inform, educate and shift mindsets of future generations in creative, accessible and impactful ways.

- OWA is exploring the gamification of complex ideas and regenerative solutions with a number of game design specialist partners.
- Systems will integrate with OWA tools as interactive, interoperable gaming and educational platforms.



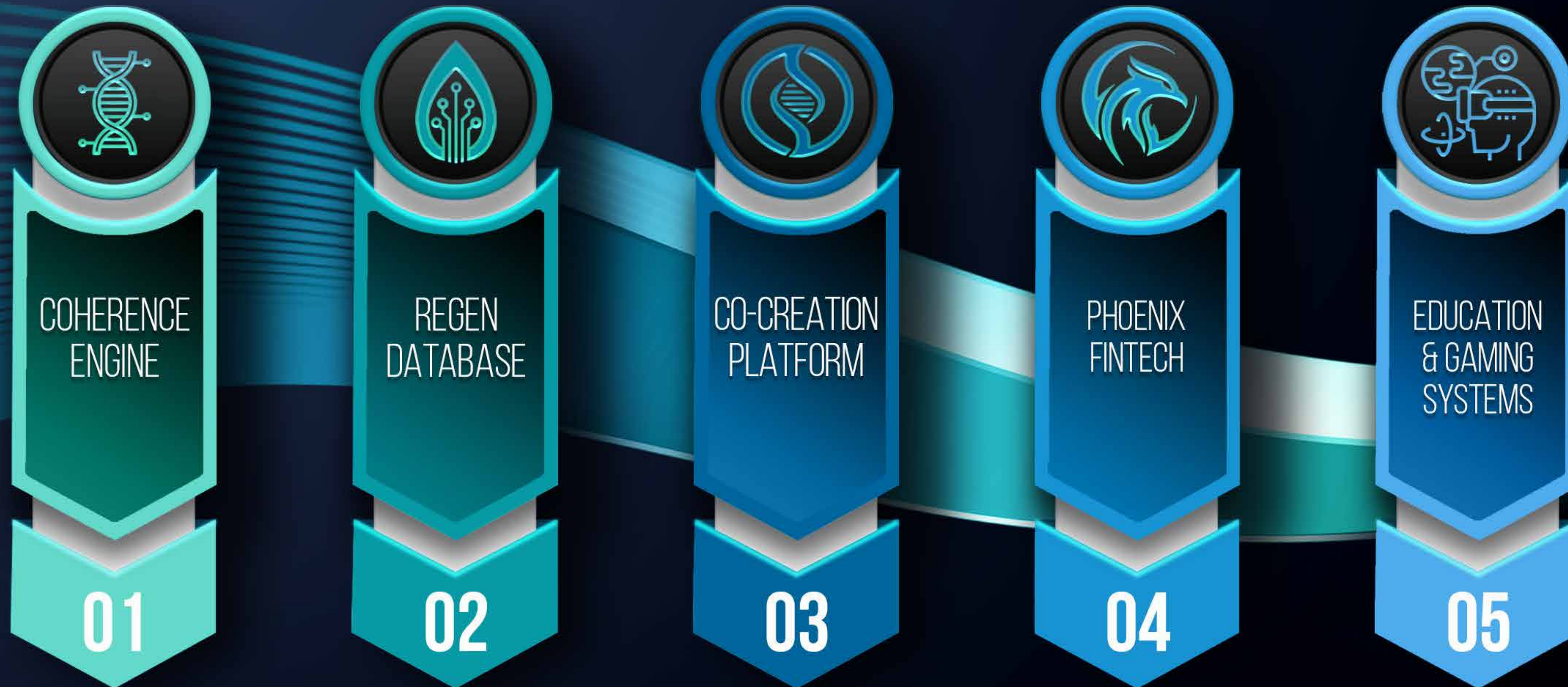
COMMUNITY & MEMBERSHIP

OWA is contributing to the emergence of a positive new paradigm through a variety of avenues including:

- Building engaged and synergised grassroots community networks to amplify momentum, collective action and movement building.
- Offering a membership programme with financing opportunities to incentivise progression towards greater sustainability.
- Raising awareness and inspiring a progressive vision towards the new narrative of innovation and planetary regeneration.

AREAS OF PRODUCTION

Key foundational infrastructure pieces currently under construction by OWA and other partners include:



NOTE:

All timescales quoted are estimated at time of writing and are subject to change.

All systems developed to be integrated with next-generation web 3.0 being developed by OWA affiliates.

COHERENCE ENGINE



WHAT: An intelligent, intuitive database directory of different stakeholders involved in new paradigm projects, innovative initiatives and emerging solutions worldwide.

WHY: Complex interrelated global issues require many distributed agents coming together at scale and operating as an intelligent coherent whole. The Coherence Engine will provide a worldwide map enabling individuals, organisations and communities to source accurate up-to-date information and provide codes upon which agents can coordinate shared activities, self-organise into larger synergies and operate intelligently as ecosystems in ways that transcend current conventional organisational boundaries.

DETAILS: This comprehensive digitalized directory will form part of the foundation architecture for the Co-Creation Platform.

HOW: Designed and constructed by multiple partners including Symphonics, Helix, Catalist, Perspect3vism and Gaiant. Phased approach, starting with manually managed processes using existing mapping technologies, databases and existing social networking tools and progressing to a full purpose-built interactive data system.

FOR WHOM: Available to all new paradigm participants worldwide. Expected to be of particular use for the co-creation of new projects and initiatives.

ACCESS: Freely available to all aligned agents. Tiered access according to relevant agreement fields.

FUNDED: Individual parts self-funded by engaged partners. Technology build funded by Higher Status Global.

TIMESCALE: Currently in planning, mapping and first-stage design phase. Build: in phases across 2021. Anticipated completion: Q4 2021 Fully Integrated: 2022

EXAMPLE USE: To access information and resources to effectively manage projects, build communities and coordinate coherent ecosystems.





REGENERATIVE DATABASE

WHAT: A smart interoperable search engine which builds intelligent profiles of information relating to social and environmental regeneration (eg. clean/green technologies, funders, projects, resources, case studies etc.)

WHY: To source accurate and up-to-date information and expertise across multiple sectors (eg. agriculture, permaculture, waste management, energy solutions and innovative scientific developments etc.) to engage and implement effective regenerative solutions for healthy environmental conditions on a macro level.

DETAILS: A standalone system that will be integrated into the Co-Creation Platform. It will incorporate cutting-edge AI solutions and feature a geo-location system utilising satellite information to match information specific to location and bio-region for next-level effective project implementation. Further iterations will allow effective 'vital signs' monitoring to assess planet 'life status', creating social acupuncture points for regenerative action.

HOW: Constructed between multiple partners including OWA, Regenerosity, Re-Alliance, Symphonics, Helix, Lush, Regen Institute and Darttek. Project managed by OWA.

FOR WHOM: Available to all players worldwide. Expected to be of particular use to individuals and organisations in the regenerative movement and potentially public policy makers.

ACCESS: Freely available as contribution to the global intellectual commons.

FUNDED: Technology build and project management funded by Higher Status Global.

TIMESCALE: Anticipated Completion: 2022

EXAMPLE USE: How to target and deploy resources most effectively and match funders to projects to maximise regenerative impact.





CO-CREATION PLATFORM

LAUNCH VERSION 1

WHAT: An interoperable socio-technological platform and operating system for new paradigm projects, partners, skill-sets and solutions.

WHY: To facilitate faster, more efficient and structured exchange of information and collective intelligence. To enable more effective communication and co-creation between individuals, organisations & communities worldwide by helping move co-creators through stages of coherency & competency as they learn, align & embody New Paradigm business relations and lifestyle to support & scale societal transformation.

DETAILS: Informed partly by the Coherence Engine architecture. Will address numerous key areas (eg. decentralised social & technological architecture, governance infrastructure, new economic systems, legal structures & community management tools etc.) Parts integrated using sovereign identity systems, incorporating whole systems-thinking social design for effective alignment and a more unified field.

HOW: Construction coordinated and co-created between multiple partners including OWA, Symphonics, Green Earth Vision, Helix & Darttek. Individual parts at various stages of development from planning to already coded. V1 is not a fully mature system but an MVP container operating system to facilitate coordination of activities in the immediate term. All partners involved in V1

are clear that many other agents have systems designs and architectures that will inform the design and delivery of the overall operating system. V1's modular and lightweight design will enable these different groups to contribute in further rounds of co-creative development once more tools are in place to organise with greater efficiency and scale. Iterative build process with versions successively tested and refined into a scalable communications infrastructure, advancing towards larger planetary level.

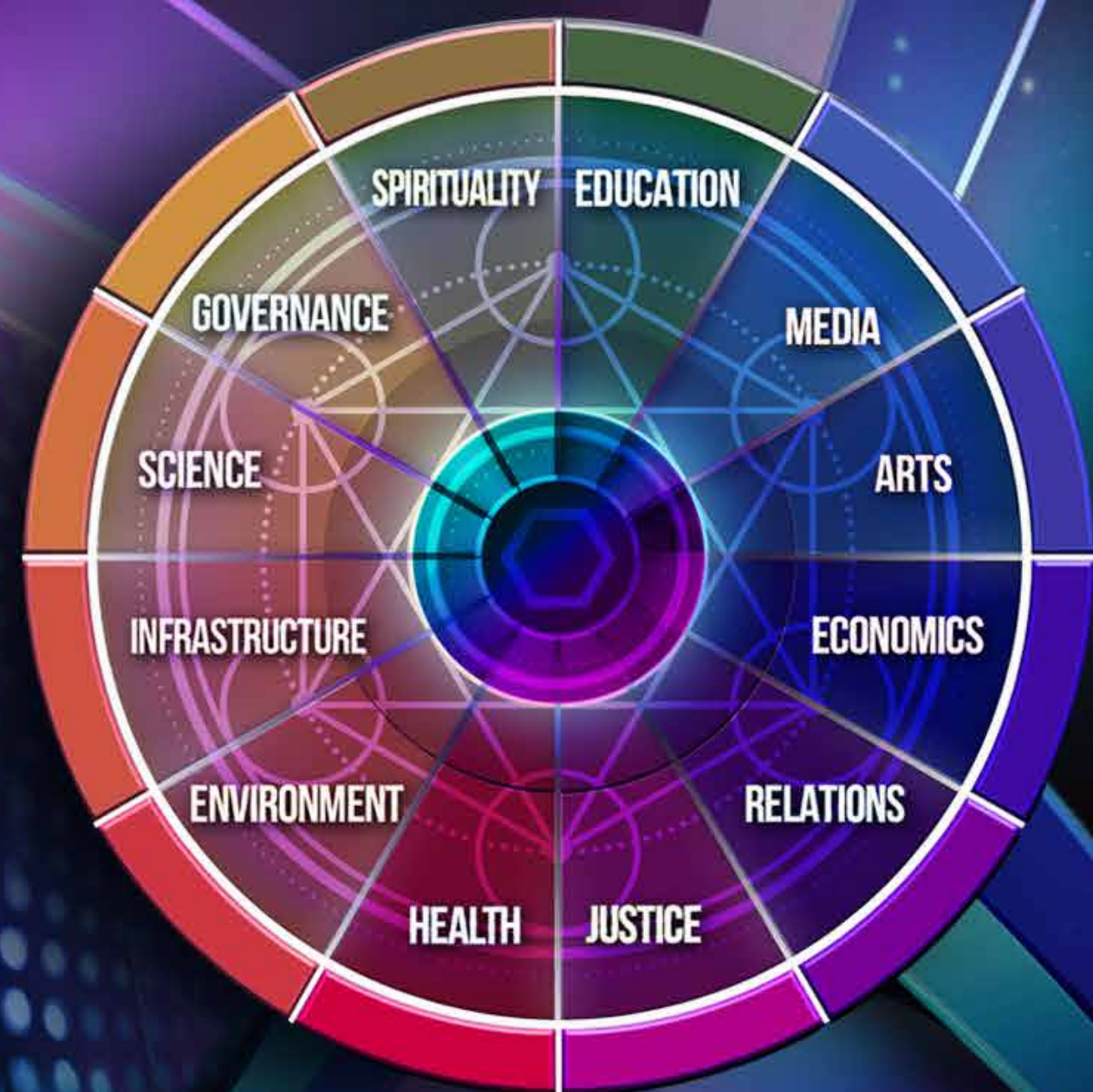
FOR WHOM: Available to all players worldwide. Expected to be of particular use for individuals & organisations involved in co-creating new paradigm projects.

ACCESS: Freely available for all aligned players. Tiered access following an alignment, education and agreement field onboarding process.

FUNDED: Individual parts self-funded by engaged partners. Technology build funded by Higher Status Global.

TIMESCALE: Build: in phases across 2021. Fully integrated first-generation V1: 2022

EXAMPLE USE: To locate, align & train with co-creators, and access resources and information to effectively manage projects and build communities.





PHOENIX FINTECH

WHAT: A high-performing automated trading software product with capacity for substantial compound capital growth.

WHY: Specifically designed to operate in the multi-billion dollar global algorithmic trading market with the intention of transforming financial capital into living capital. Revenue will be utilised to finance environmental restoration projects, support breakthrough innovations and upscale ethical business operations to amplify and accelerate regenerative transformation.

DETAILS: A cloud-based algorithmic trading platform that uses logic formula, fractal geometry and rules-based methodology with cutting-edge AI to effectively predict and adapt to market movements across Crypto, FX and Commodity markets.

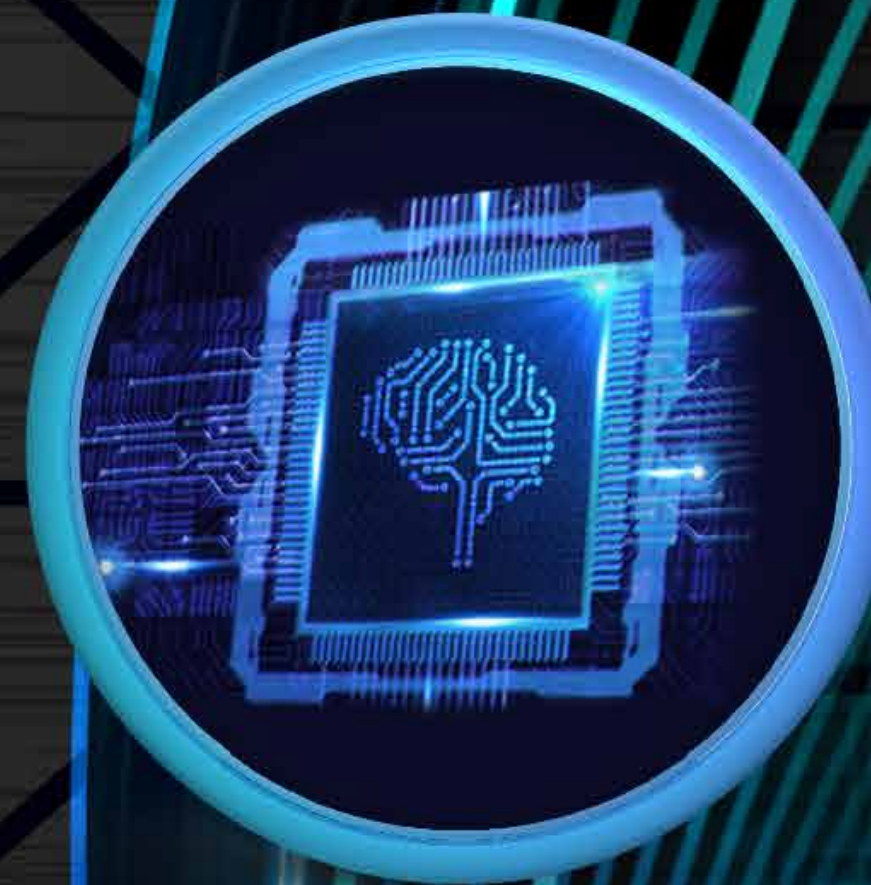
HOW: Designed by Higher Status Global. Constructed by Fintech software development company in Eastern Europe.

FOR WHOM: For Higher Status Global, Higher Status Foundation and Open World Alliance use. Also made available to aligned ethical and sustainable organisations working to support planetary regeneration.

ACCESS: Accessible to clients fulfilling sustainability and ethical business standards according to measurable third-party benchmarks.

FUNDED: By Higher Status Global.

TIMESCALE: Anticipated Completion: Q3 2021.
Operational: Q4 2021



EDUCATION & GAMING SYSTEMS



WHAT: The gamification of regenerative solutions and New Earth operating systems.

WHY: To target and engage next-generation changemakers in gamified work projects, community development, education, media and events etc. To test real-life solutions for easy replication of regenerative ideas. To facilitate community organization and further online team-building. To enable access to resources and tools in diverse locations worldwide. To shift mindsets through gamifying complex ideas in fun, interactive and impactful ways.

DETAILS: Partner organisations are developing gaming systems using augmented and virtual reality technologies that will integrate with OWA tools for increased impact when systems go online.

HOW: Multiple systems designed by a number of organisations including Civil X and NextGen Software. These will connect in an interoperable ecosystem with OWA tools and other allies to develop a cooperative based platform to facilitate training, access to resources and hubs.

FOR WHOM: Available to all.

FUNDED: Partner organisations are currently self-funding. Funding will be made available for aligned projects through Higher Status Global once Phoenix FinTech is operational.

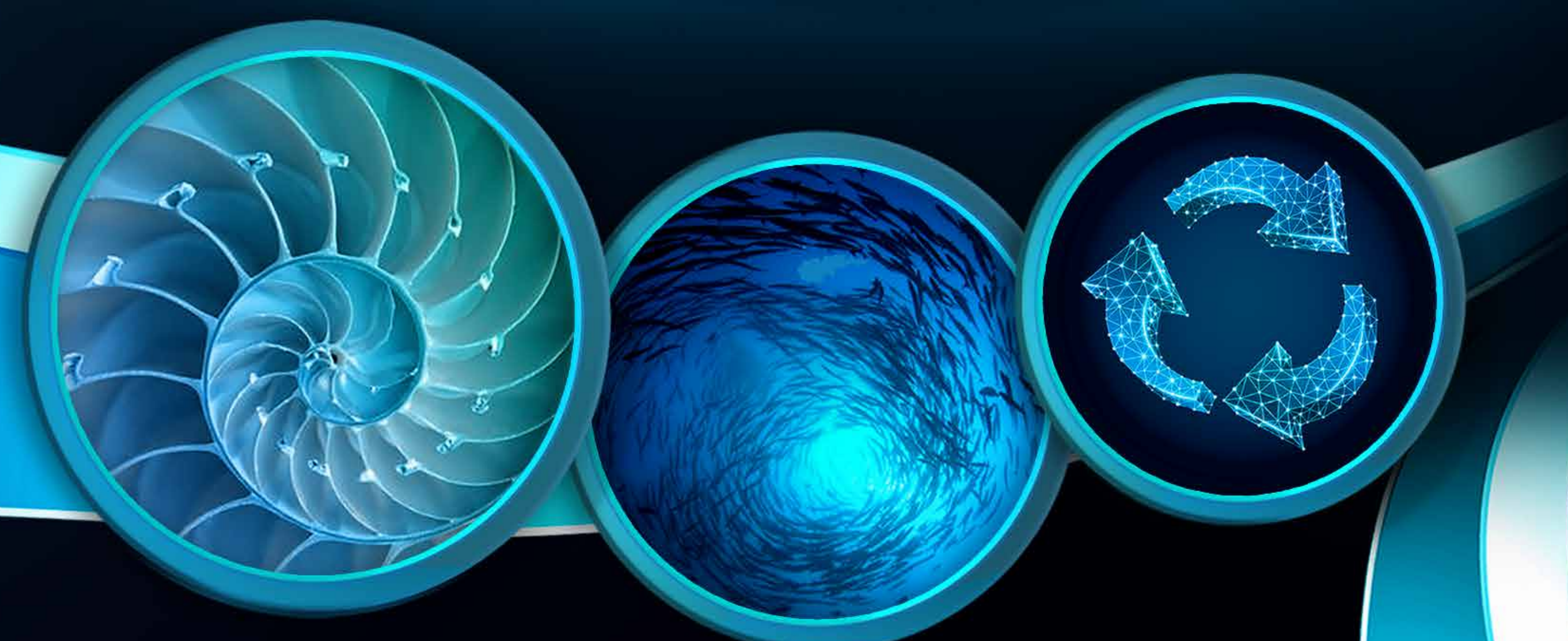
TIMESCALE: There are currently many projects under construction by various agents across the OWA network at different stages of development.

DELIVERY

OWA targets a diverse body of areas including: technology, economy, governance, environmental regeneration, renewable energy, enterprise, community, learning, planetary resilience and health amongst others, to address complex interconnected global challenges from a fully comprehensive lens.

There is no 'one size fits all' template in addressing these areas or producing these tools. Our evolving insights are incorporated into processes, tested and applied to real emerging issues, which then feeds into our thinking and practice in a dynamic and adaptive cycle of learning, refinement and improvement.

Stages will not proceed in strictly linear fashion but will be revisited in cycles and iterations, emulating the spiral and fractal-like qualities found in nature, allowing for the emergence of innovation before stabilizing structure and scaling.



DELIVERY OF STAGES

Our phased approach to project development progresses broadly as follows:

GROUNDWORK



ESTABLISHING PARTNERSHIPS

- First connections with individuals, organisations and networks across multi-disciplines globally.
- Exploring synergies & coherence through a dedicated onboarding process to form partnerships and establish agreements re: decision-making, value sharing, data, asset, IP sharing, project stewardship etc. for effective co-creation.

PHASE 1



PROJECT PLANNING

- Designing, mapping and project planning of tools, products and processes from multiple lenses (eg. technology construction, financial system, social architecture, community building etc.)

PHASE 2



PLATFORM CONSTRUCTION

- Building tools including: Coherence Engine, Co-Creation Platform, Regen Database and Phoenix FinTech, ensuring full interoperability and integration across systems where relevant.

PHASE 3



INVITATION & INTEGRATION

- Invitation to other individuals & organisations to contribute expertise in co-creation relevant to each aspect of the projects.
- Agents wishing to integrate wisdom, skills or resources will take part in an onboarding process.
- Onboarding at appropriate milestones and project phases to amplify collaborative efforts with maximum efficacy.

PHASE 4



IMPLEMENTATION & SCALING

- Projects developed through careful scaling by a process of iterations including: prototyping, stress-testing and implementation for specific issues; refining through practical application and feedback loops; applying to respective communities and gradual upscaling from local to global communities. The importance of maintaining coherence throughout is imperative.
- Larger-scale social programs (eg advocacy, campaigning) will be assessed, developed & implemented at appropriate stages ahead.

SEED PARTNERSHIP STRUCTURE

Open World Alliance is an emerging collective. The first wave of co-creators is of an optimum size to maintain coherence and facilitate effective decision-making during project development. Currently these include:

- 
- HIGHER STATUS GLOBAL:** Expertise in business consultancy, complex logistics, trading, finance, event planning and production. Provides organisational driving force, logistics, strategic planning and funding for OWA through its proprietary automated trading software Phoenix FinTech.
 - GREEN EARTH VISION:** Expertise in whole systems design and community management tools. Contributing solutionary sense making, governance models, access based economic models and multi-tiered agreement fields to the solutionary consortium to support alignment and harmony within a New Paradigm whole system framework.
 - SYMPHONICS:** Specialises in development of planetary structures and systems for co-creation that support coherent self-organisation and governance across multi-stakeholder networks. Contributes to overall meta and data architecture of new system design, Coherence Engine, Regen Database and Co-Creation Platform.
 - PROJECT HELIX:** Creates whole systems designs focused on legal, social and organizational frameworks with a pragmatic approach to transition the collective into a resource-based system. Developed the AZPO, an innovation designed to embed next-paradigm thinking into the current system for scalable and coordinated unfolding across projects.
 - EMPOWERMENT INSTITUTE CENTER FOR REINVENTING THE PLANET:** Expertise in designing and scaling a second order change global grand strategy for planetary transformation around climate, peace, development, knowledge and money. Providing social change consultation to support OWA's large system transformative innovations.

SEED DEVELOPMENT

Subsidiary project groups have been formed to facilitate adjoining submissions (eg. coherent technology, SDG partnerships, media projects etc.)

During early project stages the seed team will provide progress updates and invite advice and feedback from the broader community. At appropriate stages of development further invitations will be put out to the wider community for more co-creators to assist in systems development

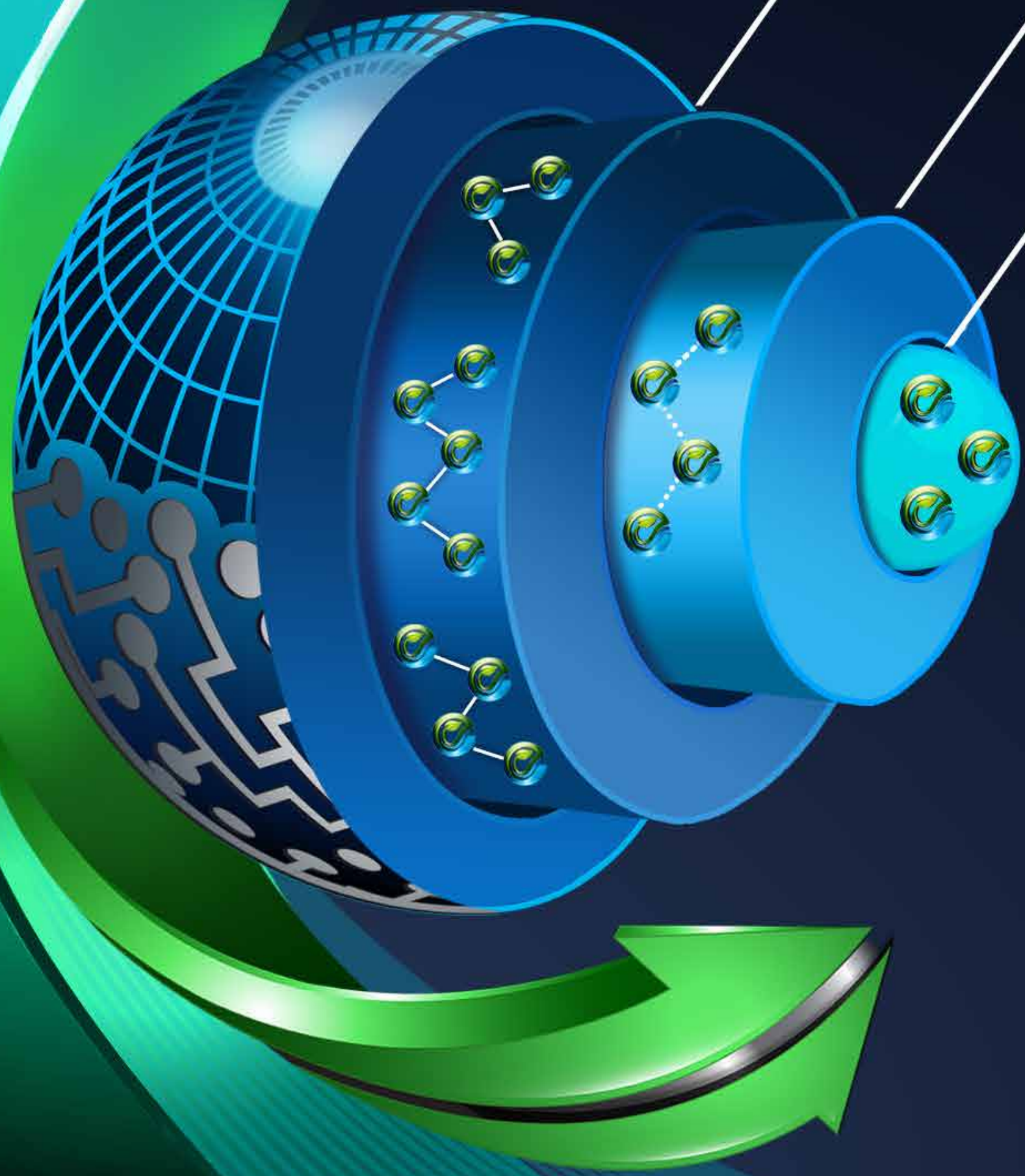
Relationships are currently developing with a second wave of co-creators including:

- | | |
|--|--|
|  Higher Status Foundation |  Meta Tao |
|  The Dawn Confederation |  Catalist |
|  Regenerosity |  Perspect3vism |
|  Core.Network |  Darttek |
|  Togetherland |  Coventina Foundation |
|  Gaienet |  NextGen Software |
|  Civil X |  PQR |

3. Multiple social organisms co-creating New Earth innovations

2. Distributed social organism, co-creating at scale

1. Coherent agents operating in transition



MEMBERSHIP

Until the OWA operating infrastructure is fully established, we will continue to network, build relations and resonance with our emerging membership base and any potential agents who may wish to draw on OWA services in the future.

Member services will operate in this informal organic way through a variety of avenues (eg. 1:1 personal Zoom calls, Telegram Community Lounge threads, spotlight sessions, introductory course modules etc.) until the Co-Creation Platform is in place to accommodate deeper integration and more involved participation.

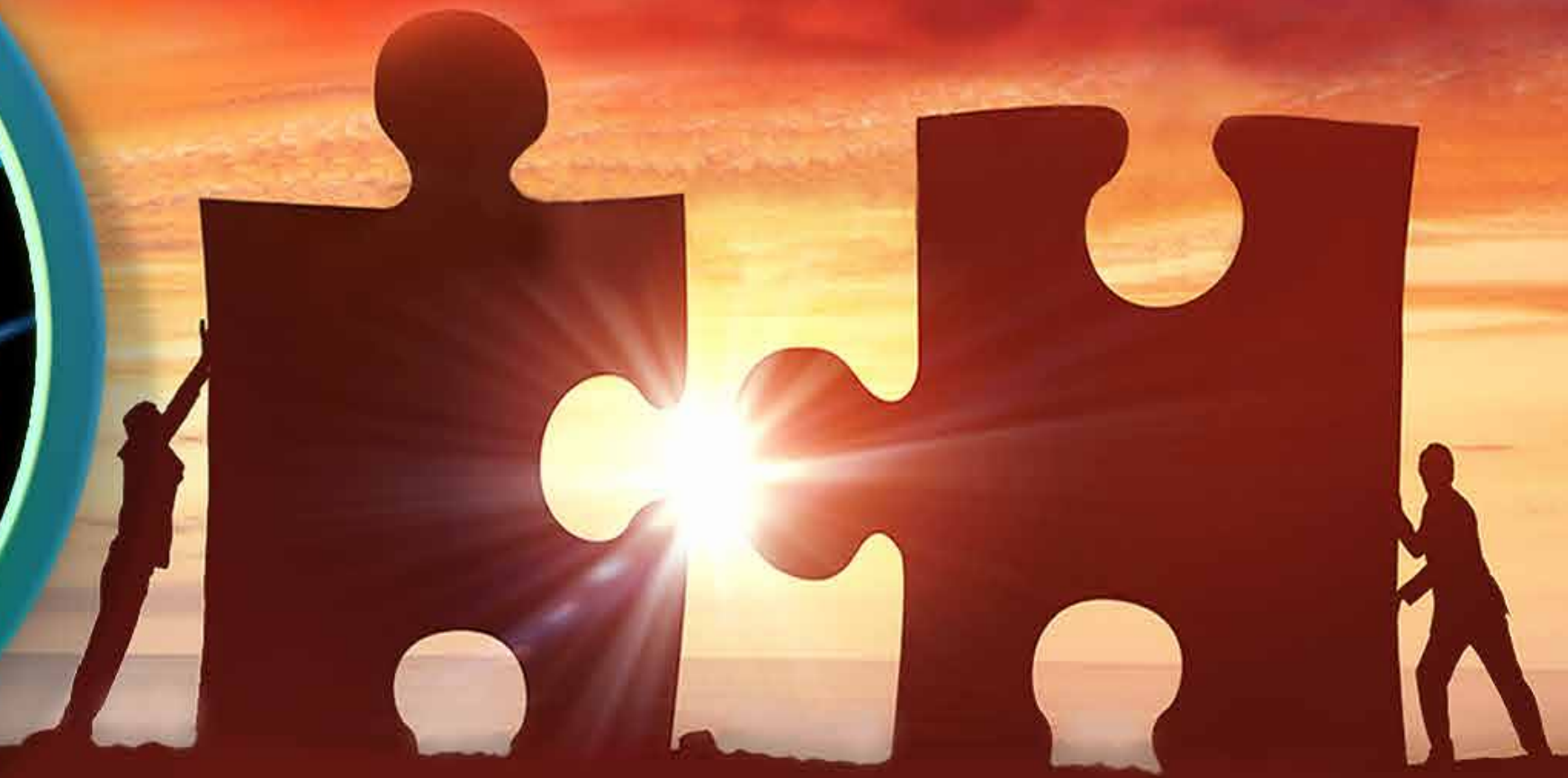
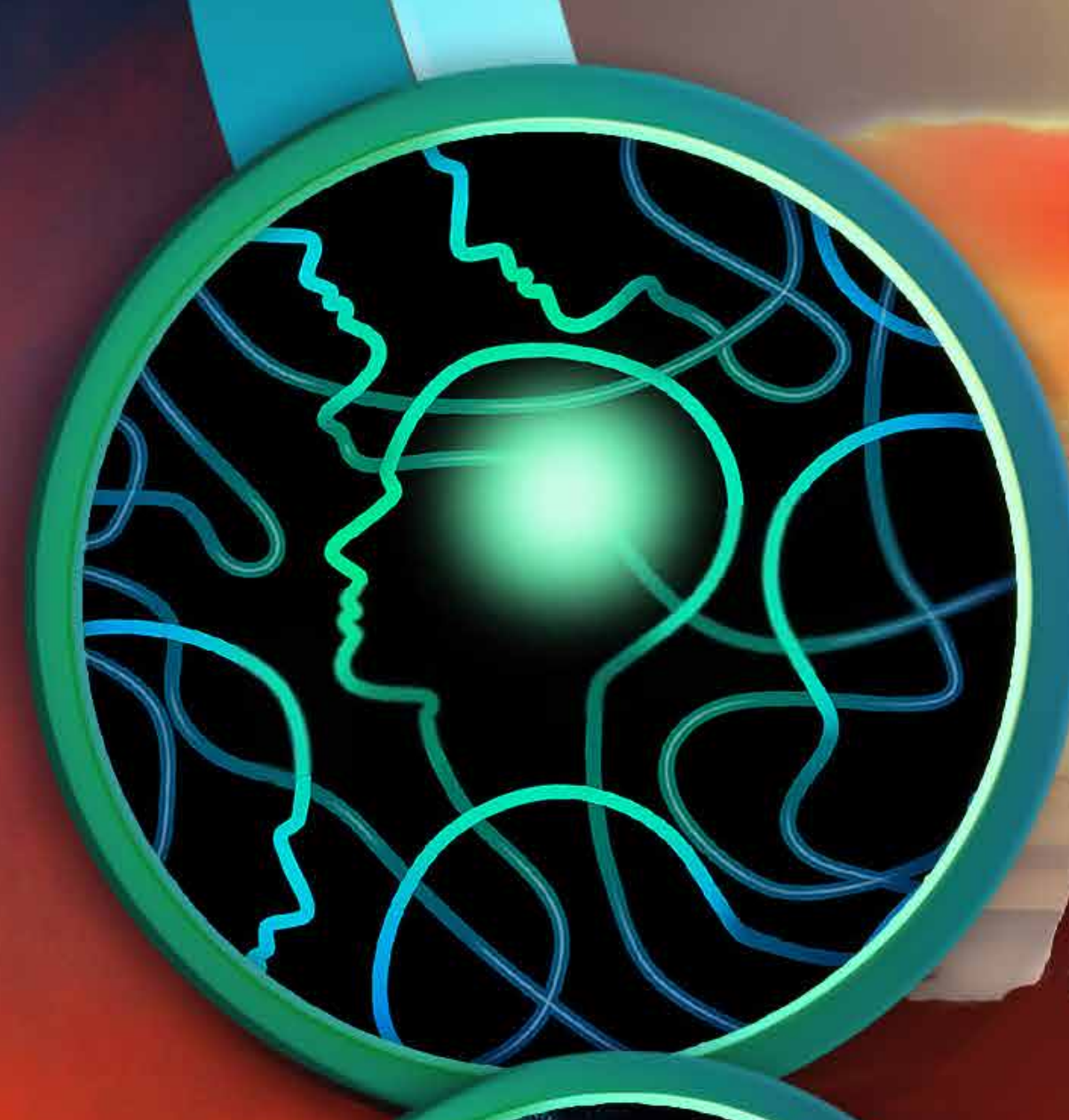
Agents should be clear that their relationship with OWA at this stage constitutes an interim stepping stone towards actual membership once onboarding is completed. Once the Co-Creation Platform is delivered, agents will be invited to participate as members and will be offered support, access to resources, information, tools, networking opportunities and other benefits on their journey to greater sustainability.



CO-CREATION ONBOARDING

Agents wishing to access shared resources and services through OWA will be invited to undergo a dedicated onboarding procedure to support co-creation.

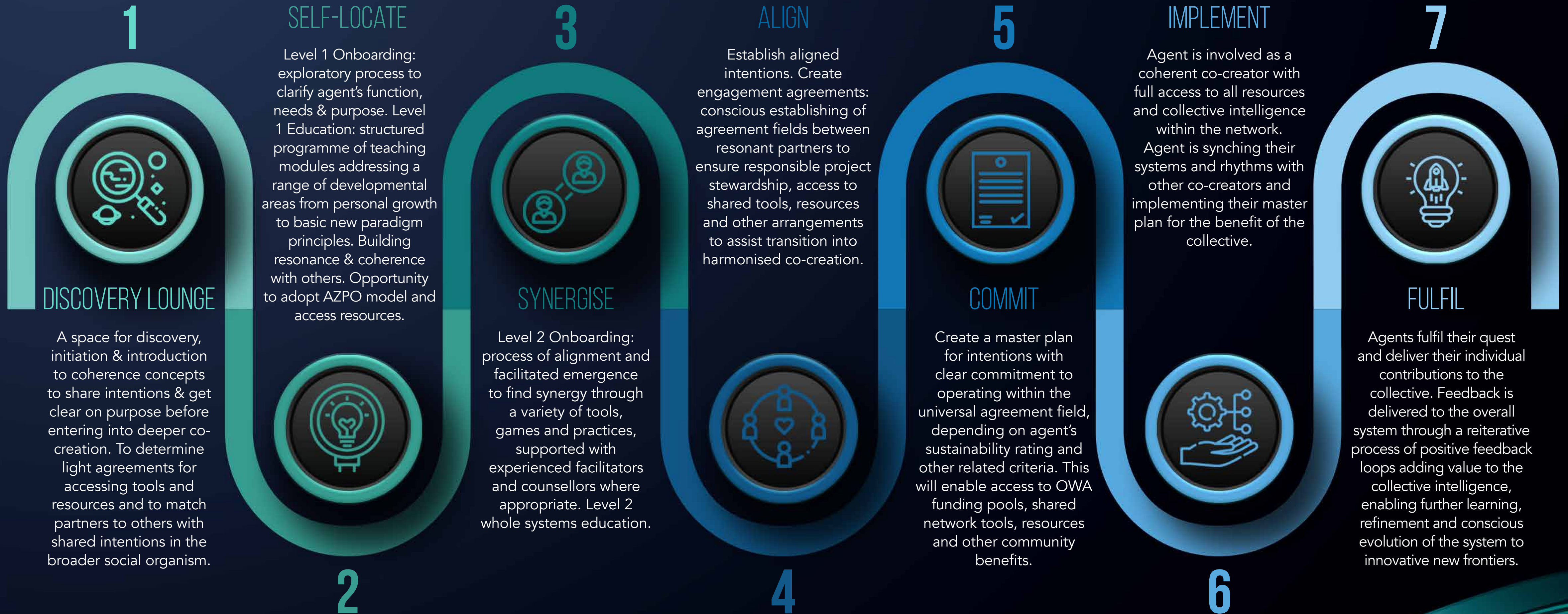
The act of co-creation between independent individuals, organisations and/or networks is a dynamic living process of interconnection. By engaging in a conscious process of integration, we can seek and discover solutions less likely to give rise to tension, misunderstanding, overlook critical connections or generate unintended consequences.



Through participating in a co-creation onboarding process, potential players can cross interpersonal, cultural and disciplinary lines to achieve a shared collective of greater understanding, meaning, intention, language and values to allow new avenues of evolution to emerge. This has the potential to synergise projects more powerfully in the wider context of a unified and harmonised field.

ONBOARDING SYSTEM

The system is being established by experienced OWA and seed partner community development facilitators. The process varies for individuals and organisations and broadly flows through the following stages:



Participation in the Onboarding System enables agents to better self-optimize, synergise and co-create more effectively. Members can then benefit from accessing shared resources, funding pools, tech platforms & tools and engage in other beneficial opportunities and actualization plans as part of a coherent and integrated system without losing their agency.

ORGANISATION

ORGANISATION STRUCTURE

OWA will adopt an Autonomous Zero-Point Organisation model (AZPO), developed by partners Helix, in 2021 as an effective means of supporting the emerging collective commons.

FUNDING MODEL

OWA embraces a circular economy funding model, operating as a holistic whole-systems thinking venture ecosystem. It is funded through Phoenix FinTech revenue via sister organisation Higher Status Global.

We support funding social and environmental solutions to restore and accelerate planetary regeneration at scale. OWA will establish funding pools through Phoenix FinTech in 2021/2022 to help fund aligned co-creators' transition to a resource-based economy that embraces participatory access and contribution.



HIGHER
STATUS
GLOBAL



OPEN
WORLD
ALLIANCE

PHOENIX FINTECH FUNDING

Phoenix FinTech fuels the heart of our economic ecosystem. It creates new value transforming financial capital into living capital to support societal and environmental restoration. Once operational in 2021, revenue generated by Phoenix FinTech will support a number of opportunities through the following vehicles:

HIGHER STATUS GLOBAL

- Provides financial investment service to ethical organisations, assessed according to third-party sustainability measures, to upscale their own financial resources, assist their regenerative impact and progress their journey towards greater sustainability.
- Donates significant proportion of revenue to fund Higher Status Foundation and Open World Alliance.
- Invests in companies, projects and initiatives that positively benefit society and environment and are best positioned to navigate the global shift towards sustainability (eg. breakthrough innovations, clean technologies etc.)



OPEN WORLD ALLIANCE

- Generates its own funds through Phoenix FinTech for business operational costs.
- Strategically allocates philanthropic grants to support new paradigm projects, organisations, breakthrough innovations and regenerative technologies that have the potential to scale up.

HIGHER STATUS FOUNDATION

- Strategically allocates philanthropic donations to support ecosystem regeneration projects that nurture planetary health resilience. Projects will be fully assessed for regenerative benefits and due diligence with the support of experienced specialists including Regenerosity and Re-Alliance.
- As a not-for-profit charitable organisation, HSF will form strategic partnerships with other businesses and foundations to develop impactful opportunities.

OWA PROJECT ROADMAP

This is a 10 year project of comprehensive whole systems design that will build in a phased approach. Core areas of work and approximate project timelines of OWA activities with current engaged partners include:

PHASE	PROJECT	ACTION	ENGAGED PARTNERS	OUTCOME	APPROX. TIMESCALE
PHASE I SEEDING	Phoenix FinTech R&D	Develop a high-performing financial tool capable of capital growth and finance restructuring.	Higher Status Global	Analysis, development and testing of robust strategies. Full Functional and Technical Specification Documentations produced.	2017-2020
	Phoenix FinTech Software and Web Platform Construction	Construct the automated software financial trading tool and web platform for software integration and account management.	Higher Status Global Software Development Company in Eastern Europe	Construction of cloud-based automated software trading tool and web platform.	Commenced: 2020 Completion: 2021
	OWA Formation	Establish an alliance of like-minded collaborators for effective transformative action.	OWA, HSG & multiple partners	Emergent collaboration of aligned allies.	February 2020
	OWA Community Lounge Group and working Project Groups	Host a dedicated space to connect multidisciplinary players worldwide to share knowledge, mission intentions and facilitate collaboration.	OWA, HSG & multiple partners and collaborators	Introduction OWA communications group set up on Telegram. Multiple working project groups set up for specific fields.	April 2020
	OWA Development	Secure first wave network partnerships. Develop media and promotional assets.	OWA, HSG	OWA website, PDF and other media assets produced.	June 2020
	OWA Facebook Group	Activate community outreach with a wider inclusive space to connect multidisciplinary players worldwide to share knowledge and facilitate collaboration. To disseminate awareness through social media channels.	OWA, HSG & multiple partners and collaborators	Community OWA group set up on Facebook.	Sept 2020

PHASE	PROJECT	ACTION	ENGAGED PARTNERS	OUTCOME	APPROX. TIMESCALE
PHASE I SEEDING	Synergisation Process	Create alignment between seed agents to ensure coherence for most effective communication and project implementation.	OWA, Symphonics, Green Earth Vision, Helix	Establishing coherence, agreement fields and project plans. Producing documentation.	2020 - 2021 In progress
	Fundraising	Source investments to support project builds, OWA operational costs and expansion.	OWA, HSG	Investment materials completed. Relationships with potential funders developed. Fund pitching. Fund negotiations underway.	2020 - 2021 In progress
	Coherence Engine	Phase I - Establish partnerships, project plans and agreement fields for project build.	OWA, Symphonics, Helix, Gaianet, Perspect3vism, Catalist	Establishing partnerships, developing stewardship agreements, determining tools, designing architecture and mapping multiple ecosystems.	2020 - 2021 In progress
	Co-Creation Platform	Phase I - Establish partnerships, project plans and agreement fields for project build of V1.	OWA, Symphonics, Green Earth Vision, Helix, Darttek	Exploring integration of all system aspects. Developing protocols & system architectural design. Project pre-planning.	2020 - 2021 In progress
	Regenerative Database	Phase I - Establish partnerships, project plans and agreement fields for project build.	OWA, Regenerosity, Re-Alliance, Symphonics, Helix, Lush, Regen Institute. Darttek & others TBC	Data mapping, ontology design, project implementation, UI design. Create agreement fields for data commons and agent invitation presentation.	2020 - 2021 In progress

PHASE	PROJECT	ACTION	ENGAGED PARTNERS	OUTCOME	APPROX. TIMESCALE
PHASE II BUILDING	OWA Web Platform for Regen Database integration	Design and build of fully integrated new OWA platform as a portal to the Co-Creation Platform & Regen Database integration	OWA, Helix, Darttek	Currently in planning	Q3/Q4 2021
	Phoenix FinTech Software and Web Platform	Software and web platform operational	HSG	Software generating funding Client accessing web platform	Q3/Q4 2021
	AZPO Legal Structure	Developing internal legal structuring program to create initial AZPO ecosystem and contracts around commons	Helix	In progress	Q2/Q3 2021
	Coherence Engine	Phase II - Project build	OWA, Symphonics, Helix, Gaianet, Catalyst, Perspect3vism	In progress	Commencing: Q2/Q3 2021
	Co-Creation Platform	Phase II - Project build and invitation to multiple stakeholders for integration	OWA, Symphonics, Green Earth Vision, Helix	In planning	Q3/Q4 2021 - 2022
	Regen Database	Phase II - Project build and other stakeholder integration	OWA, Regenerosity, Re-Alliance, Symphonics, Helix, Lush, Buckminster Fuller Institute, Wocat, Ecolise, Regen Institute & others	In planning	Q3 2021 - 2022
	Phoenix FinTech client onboarding	Accepting HSG clients.	HSG	To follow	Q4 2021 onwards

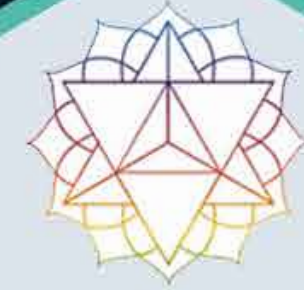
PHASE	PROJECT	ACTION	ENGAGED PARTNERS	OUTCOME	APPROX. TIMESCALE
PHASE III DEVELOPING	Coherence Engine	Phase III - Build into 3D holonic, agent-centric architecture system and integrated into Co-Creation Platform	OWA, Symphonics, Helix, Gaianet, Perspect3vism	In planning	Q4 2021- 2022
	Regen Database	Phase III - Build, integration of bioregional information layers, satellite information and AI algorithms.	OWA, Regenerosity, Darttek & multiple other partners & dataholders	In planning	Q4 2021- 2022
	Co-Creation Platform	Phase III - Project build fully integrated with data architecture supporting multiple apps.	OWA, Symphonics, Green Earth Vision, Helix & other system designers	In planning	Q4 2021- 2022
	Funding	Create funding pools to seed projects for OWA Members	HSG, OWA	To follow	Q3/Q4 2021 onwards
	Philanthropic Grants	Funding environmental restoration and breakthrough innovations to accelerate regenerative transformation.	HSF	To follow	2022 onwards
	OWA Member Onboarding	Invite coherent members to OWA through enrolment campaign and membership programme	OWA, Symphonics, Green Earth Vision, Helix	To follow	Q3/Q4 2021 onwards
	PHASE IV EXPANSION	Regen Database	Phase IV - Integration of data & gamification systems with other organisations	OWA, Civil X, NextGen Software & others TBC	To follow
All OWA Tools and Activities		Expansion of Networks Expansion of Community Learning Scalability of Programmes Global Media Expansion	Multiple aligned partners	To follow	Ongoing into 10 year plan

ALLIES

Open World Alliance is currently co-creating, collaborating or closely communicating with the following allies, experts and advisers in a dynamic process that will adapt and evolve as we continue to develop our network ahead:



REGENINSTITUTE



SYNTROPY X



PLANET POSITIVE VENTURES



Symphonics

GREEN EARTH VISION



HIGHER STATUS FOUNDATION



EMPOWERMENT INSTITUTE

PERSPECT3VISM

regenerosity



re-alliance



TOGETHERLAND



META TAO

HELIX



UNIFY



CATALIST



DARTTEK
RIGHT ON TARGET



CORE NETWORK



NextGen Software Ltd
Co-creating a better world for tomorrow



coventina



CIVILIX



PQR



Gaiagnet



Frequency Village



SEEDS



ONE

BOUNDLESS
IMPACT RESEARCH & ANALYTICS



Future-Fit
Business



TechnéVerde



CONTACT

We are keen to explore new ground and opportunities emerging at the intersection of where technology meets sustainability. We believe in building networks that thrive through dynamic co-creation and invite connections with like-minded individuals and organisations interested in collaborating for the benefit of the collective.

We invite you to join our mailing list, Facebook page and Facebook OWA Community Group below.

OWA is actively addressing all of the UN's Sustainable Development Goals in developing integrated solutions for planetary regeneration with our partners.



Email: info@openworldalliance.org



Web: www.openworldalliance.org



Facebook Page: [OWA Page](#)



FB Group: [OWA Community Group](#)

Feel free to get in touch, we'd love to hear from you!

